

# URAYAMA Dam

## Chichibu City, Saitama, JAPAN



**Dam Type: Concrete gravity**

**Completion: 1999**

**Total reservoir capacity: 58 mil m<sup>3</sup>**

**Dam height: 156m**

**Length of dam crest: 372m**

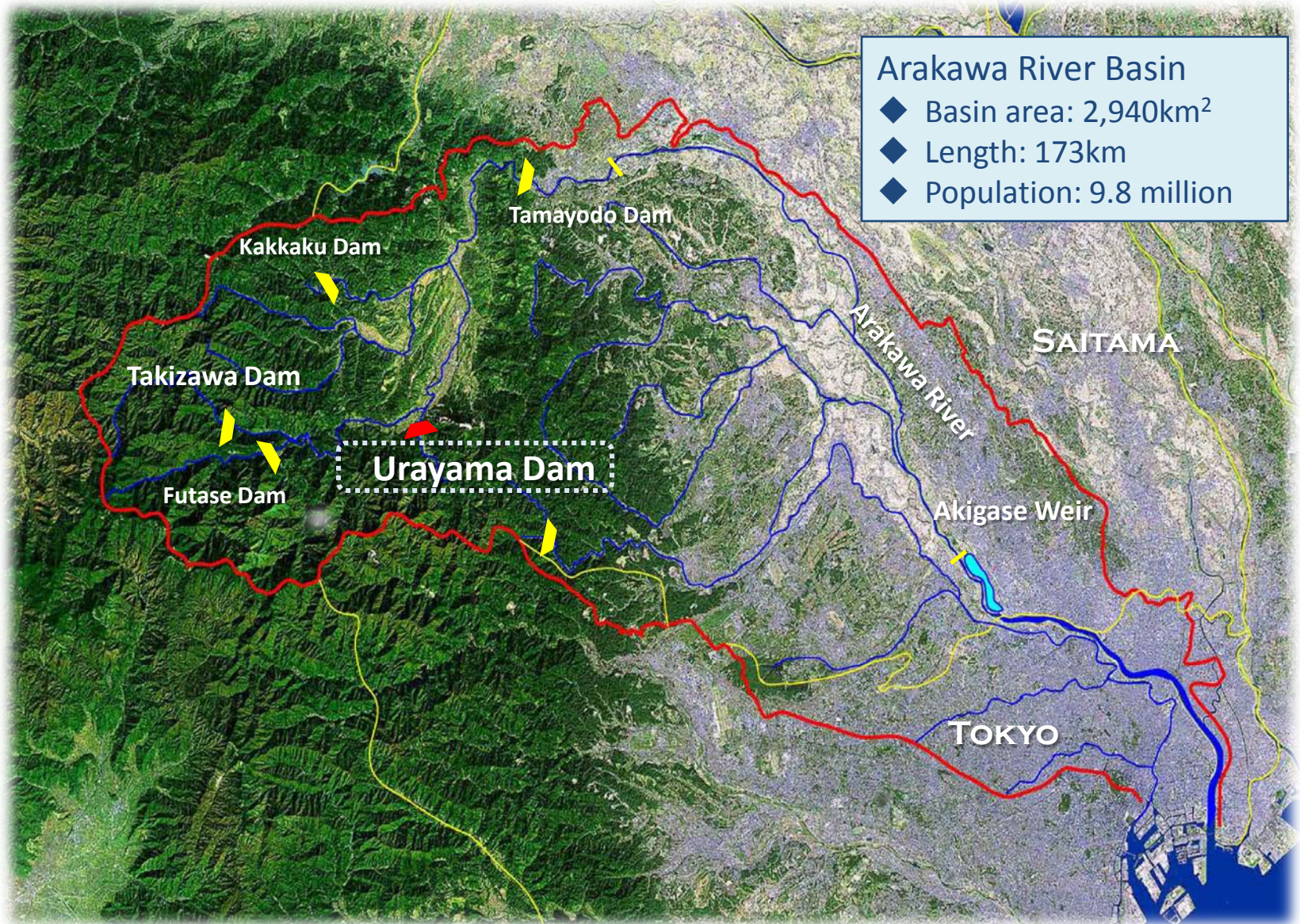
**Catchment area: 51.6km<sup>2</sup>**

**Reservoir area: 1.2km<sup>2</sup>**



# URAYAMA Dam - *Getting along with Chichibu over 20 years* -

**Location of the Urayama Dam** - Upstream of the Arakawa River -

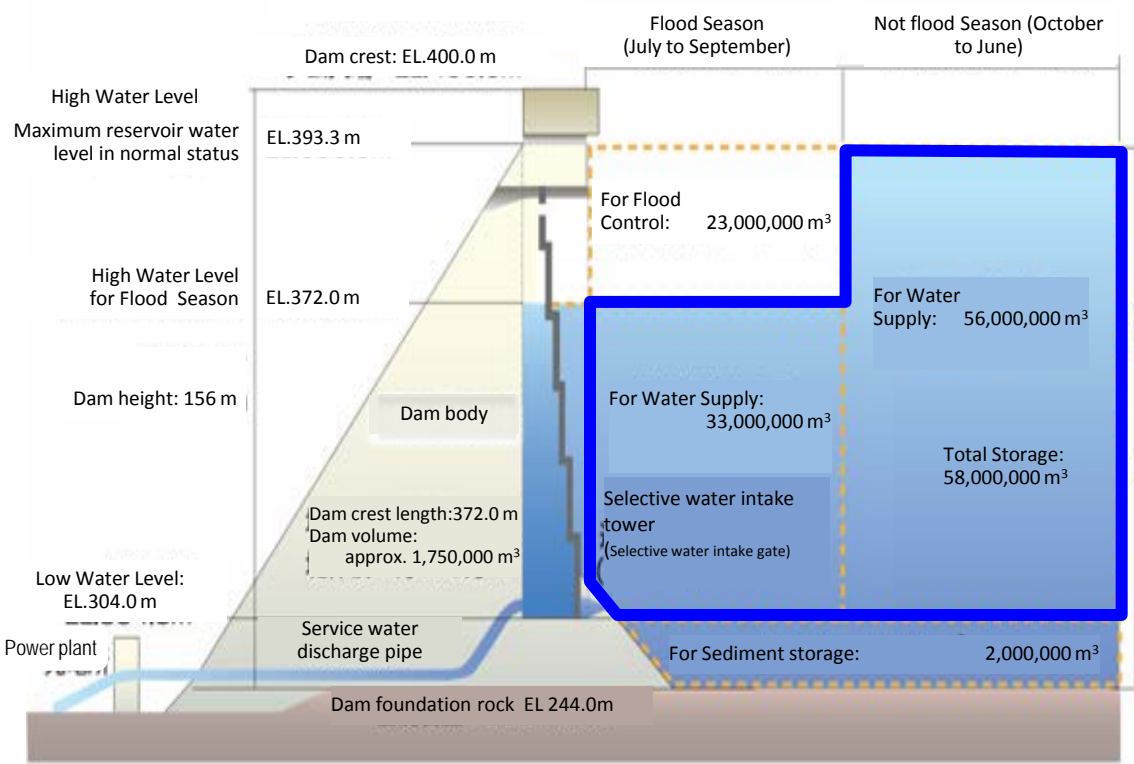




# URAYAMA Dam - *Getting along with Chichibu over 20 years -*

## Why Urayama Dam was constructed and for what purpose?

The Urayama Dam, a 156m height concrete gravity dam with 1.2 km<sup>2</sup> reservoir area and 5.8 million m<sup>3</sup> capacity of water storage, has been contributing to our society in metropolitan area through flood control, water supply for domestic use, hydropower generation and securing natural river flow of the Ara river for over 20 years. Thanks to the Urayama Dam, flood damage in downstream areas including Tokyo was reduced, and stable water supply to domestic use was secured in all seasons. To complete the dam construction, it took over 30 years and 1.7 billion USD, and 50 households were relocated.



# URAYAMA Dam - *Getting along with Chichibu over 20 years* -

## How to enjoy Urayama Dam

Visitors can enjoy beautiful scenery and fresh air in addition to learning the functions of the dam and nature of Chichibu. On rainy days, visitors can enjoy the scenery from the exhibition hall and learn more about water resources and the natural environment in Chichibu. In addition, visitors can enjoy the original gourmet meal named 'Urayama Dam Curry and Rice' symbolizing the shape of the Urayama Dam. Currently, 'Urayama Dam Ramen' is getting famous, because there are only a few kinds of 'Dam Ramen' in Japan. These special foods are available at the cafeteria-style eating space in the exhibition hall (Wed to Sun between 11:30 and 13:00).



## Dam Card - a communication tool with visitors -

Now, do you know a dam card? It was created as one of the public relations goods to enhance understanding of the necessity of the dam and communications with visitors. Visitors can get it at the management office with free of charge. In Chichibu areas, 4 kinds of 'Dam Card' are now available at respective dams. After collecting all cards and visiting the FUTASE Dam located in the upstream of the Ara River, you can get really the original 'Special Dam Card' with a serial number on it. With combination of social study and leisure by visiting 4 dams in Chichibu region, enjoying beautiful scenery and delicious foods, we will assure you valuable days in Chichibu.